

# GATOR DREDGING

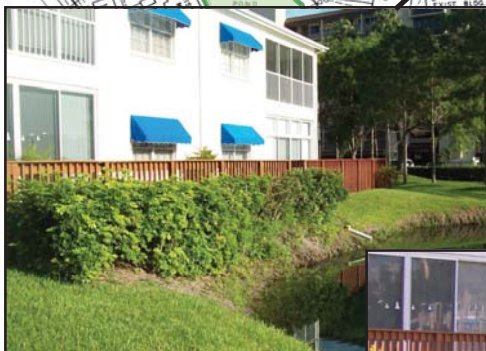
# COMMUNITY SERVICES



**FEASIBILITY STUDY  
SURVEY SERVICES**



**SURVEY / PERMITTING  
MARINA DREDGING**



**BANK EROSION**



**BUILD UP  
VEGETATION  
MUCK**



**BANK STABILIZATION**



**POST POND  
DREDGING**



# COMMUNITY SERVICES

## POND/LAKE RESTORATION

Gator Dredging has been working with Property Managers and Communities, throughout Florida, for over five years. Gator Dredging offers a wide variety of services to assist in the continued maintenance of a community's storm water needs. Below are examples of a **Pond Restoration** and **Bank Stabilization**.



### SERVICES

- POND/LAKE DREDGING
- BANK STABILIZATION
- MARINA DREDGING
- STORM DRAIN RESTORATION
- STORMWATER INSPECTIONS
- SURVEY SERVICES
- FEASIBILITY STUDIES

### ABOUT US....

GATOR DREDGING is licensed and insured as a State of Florida Certified General Contractor (CGC #1510302) with on site personnel who provide a quality project within a minimal time period.

GATOR DREDGING is based in Pinellas Park, FL with company owners who have over 30 years of experience in the dredging and environmental engineering field with licensed professional engineers on staff to handle permitting and technical issues.

### SERVING ALL OF FLORIDA'S COMMUNITIES

The engineers at GATOR DREDGING have developed a dredging and dewatering process which allows for an economically yet environmentally sensitive dredging project. The process combines technological innovations with conservative marine equipment to provide a speedy process for removal of sediments around docks, marinas, canals, ponds, and rivers.

If your community would like a **FREE CONSULTATION** for our services, please contact us at [sales@gatordredging.com](mailto:sales@gatordredging.com), and for further information visit [www.gatordredging.com](http://www.gatordredging.com)

## BANK STABILIZATION

Pond banks commonly can begin to erode and fail over time. Gator Dredging offers a quick and aesthetically pleasing solution. With the installation of "Rip Rap" along the eroding and failing banks, the pond instantly is stabilized from further erosion. Below is a successful project where Rip Rap was used.

